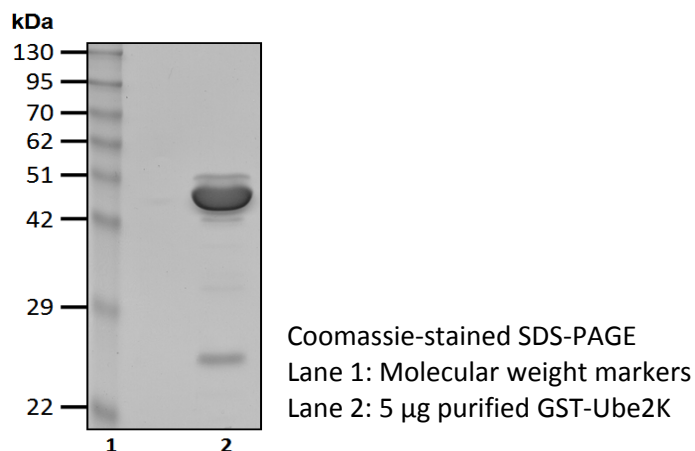


# GST-Ube2K (E2-25K)

Cat. # C2801

<b>Also Known as:</b>	LIG; HIP2; HYPG; UBC1; E2-25K; DKFZp564C1216; DKFZp686J24237
<b>NCBI Reference:</b>	NM_005339
<b>MW (no tag):</b>	22.4 kDa
<b>Species:</b>	Human
<b>Source:</b>	Bacterial recombinant
<b>Tag:</b>	GST
<b>Price:</b>	\$190
<b>Size:</b>	100 µg
<b>Stock Buffer:</b>	20 mM Tris, 150 mM NaCl, 2 mM βME, 10% Glycerol
<b>Concentration:</b>	See tube label
<b>Quality Assurance:</b>	~90% by SDS-PAGE

## Image



**Description:** Ube2K (or E2-25K) is an E2 enzyme, which is part of the E1, E2, and E3 cascade responsible for ubiquitination of protein substrates. It contains a C-terminal UBA domain and an E2 catalytic domain. Ube2K contains a 47 amino acid residue tail that contributes greatly to its specific characteristics. Ube2K is one of the E2s that are capable of forming K48-linked polyubiquitin chains.

**Storage:** Store at -80°C; avoid multiple freeze-thaw cycles

**Note:** N/A

**Literature:**

1. Kalchman MA, *et al.* (1996) J Biol Chem 271, 19385 – 19394.
2. Haldeman MT, *et al.* (1997) Biochemistry 36(34), 10526 – 10537.
3. Yao T, *et al.* (2000) J Biol Chem 275, 36862–36868.

